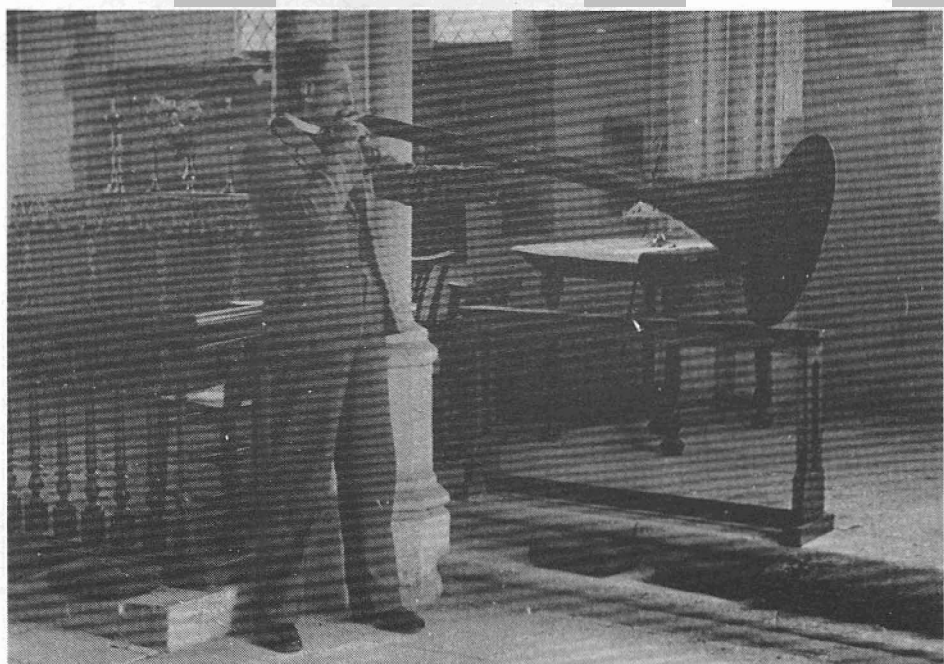




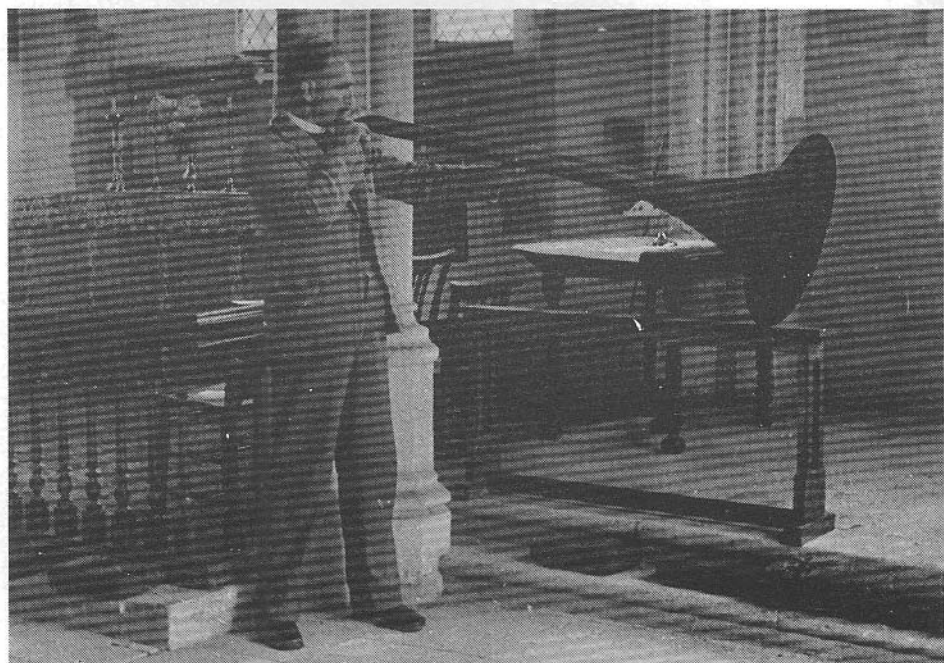
BRAYBROOK, c. 1907. Looking north towards the village from the road to Arthingworth.



THE REV. RONALD LOXSTON demonstrating the Braybrook vamping horn, c. 1958. This curious instrument dates from the late seventeenth century. It was used to amplify the voices of the church choir and the leaders of metrical psalm singing. The horn is now on loan to the Harborough Museum.



BRAYBROOK, c. 1907. Looking north towards the village from the road to Arthingworth.



THE REVd RONALD LOXSTON demonstrating the Braybrook vamping horn, c. 1958. This curious instrument dates from the late seventeenth century. It was used to amplify the voices of the church choir and the leaders of metrical psalm singing. The horn is now on loan to the Harborough Museum.